

# DRAWN TO THE VALLEY



***Celebrating our 20th Anniversary Year***

## Annual General Meeting 2024

The Drawn to the Valley AGM will take place on Friday 8th November 2024 at the Yelverton War Memorial Hall at 7pm. All members are encouraged to attend. This is a great opportunity to air your views and help us continue to improve and innovate.

Before and after the meeting there will be refreshments and time to mingle with fellow members. There'll also be a sale of art materials. If you have spare art materials, just bring along anything you would like to sell, such as paints, canvases or sketchbooks, or an easel, perhaps frames, brushes, pencils. Anything you have which you do not now need.



**Saturday 23rd until Sunday 24th November at Yelverton Memorial Hall, Meavy Lane, Yelverton, PL20 6AL**

With a successful Summer Exhibition and Open Studio behind us Drawn to the Valley is planning its final event of the year, Drawn to Make. Now in it's 5th year, this exhibition showcases some of the best in contemporary art and crafts from its members. This 2 day festival will be held again at Yelverton Memorial Hall and will feature textiles, ceramics, jewellery and much more.

The Makers Gallery will be there to inspire you with a selection of ideas for affordable and unique Christmas gifts and the Plymouth Cancer Care charity will provide delicious home made cakes and lunches. Why not join us on Saturday or Sunday 23rd and 24th November?

Member Christine Smith will be launching her range of driftwood jewellery at this year's Drawn to Make. Inspired by her time spent foraging on North Atlantic beaches, she has accumulated an inspiring collection of driftwood. In the past, she has often featured her finds in artwork but now her focus is on unique pieces of jewellery. She will be just one of the many talented 3D and 2D exhibitors. Help to make it another really successful event by spreading the word.



Inside this Issue:

AGM & Drawn to Make.....	1
Our Plans for 2025.....	2
Our Plans for 2025 and Members' News.....	3
Members' News.....	4
Featured Artist.....	5
Workshops.....	6
Updates from TVNL.....	7
Your Committee.....	8

We encourage content for the newsletter; do email us your news.

[contactdttv@gmail.com](mailto:contactdttv@gmail.com)

Please share your news and latest work on our social media pages:

<https://drawntothevalley.com>



# Our Plans for 2025

## Getting ready for our next Open Studios

A big thank you goes to everyone who completed the forms we recently sent out, a Feedback Form to those who had taken part in Open Studios this year, and a Questionnaire about dates which went to all members. It's extremely helpful to have everyone's views.

The Committee have looked at all the responses, some of which have already helped with planning for next year. It is clear from answers to the questions about the time of year and the length of the opening period, that a large majority are in favour of sticking to our established arrangement. Therefore, Open Studios 2025 will be 23rd to 31st August.

Other responses will be used by a Working Group to help make sure arrangements work well for next year. Responses show the brochure was thought to be well designed and good quality, giving all the information that was needed, and distribution worked well for most members. The brochure was successful in other ways too – with no cost for artwork, printing costs being hugely reduced, and sales of advertising space offsetting much of the cost. There was some very good social media promotion of Open Studios this year, but we certainly need to improve other forms of publicity and promotion, so a lot of attention will be given to that.

To make Open Studios as successful as possible in 2025 we need to have a Working Group made up of members who can go through all the feedback in detail and put into place appropriate actions. It would be nice to find members who could tackle publicity in its many guises, to achieve a greater awareness of the event, and perhaps members of the Working Group could also find ways to encourage more visitors to the outlying venues. With the right people, a lot can be achieved.

## Exhibition plans for 2025

**There is still some planning to be finalised, but we now have an outline of our events for next year.**

**Early April (dates to be arranged), Ocean Studios, Plymouth.** This has been our slot for Drawn to Print, but we plan to expand the scope this year to include other arts.

**31 May to 8 June, National Trust Cotehele.** An exhibition of members' art on the theme of W.M. Turner to celebrate the 250th anniversary of his birth. It could perhaps include art influenced by Turner's style, or of the landscapes around this area where he sketched or painted. More details to follow.

**Summer (dates to be arranged), Butchers' Hall, Tavistock.** Our regular Summer Exhibition, possibly a little earlier in the summer this year.

**23 to 31 August, Open Studios**

**November, Drawn to Make**

**There will also be Drawing Days, Creative Tables and possibly some other events through the year.**

# Our Plans for 2025

## Working Groups

We need Working Groups for all exhibitions as well as Open Studios. Would you like to be part of one of these?

The tasks involved will vary according to the particular event, but it is likely that members who are good at organising and communicating will be very valuable, as will those who can create posters or arrange press coverage and social media. Groups may also deal with creating application forms and putting together stewarding rotas. Some of the groups will also be responsible for the layout as well as setting up and hanging or display at exhibitions.

Groups wouldn't need to meet very often as a lot could be achieved through a chat group. If you think you might be interested, please get in touch; or come along and put your name forward at the AGM.

## Members' News

Plymouth area rep, Clare Rogers, has shared this exciting news about an ongoing exhibition.

Following on from the success of the previous two annual exhibitions, The Dartmoor Collective is currently holding this year's annual exhibition in Plymouth at the Manor Street Galleries, just off Union Street.

The exhibition features 25 artists working across a diverse range of styles and media, including contemporary painting, printmaking, photography and drawing. The exhibition showcases a vibrant and eclectic selection of Dartmoor inspired artwork.



A few Drawn to the Valley members have had their work selected for this exhibition, including Clare Rogers, who is delighted to be showing her printmaking and drawing with the Collective.

Clare's monotype printmaking is inspired by the colours of the Dartmoor landscape. Blending the ink on a printing plate before putting it through her printing press, she builds up layers of colour, creating an ethereal feel of moody, misty landscapes. Once dry, she draws specific trees found on Dartmoor. The finished prints invite the viewer to experience the magical qualities of the moor, evoking the mysteries of ancient trees, woodland and landscape.

The exhibition runs until 27th October, 10am-4pm every day.

[www.DartmoorCollective.org](http://www.DartmoorCollective.org)

# Members' News

## Drawn to the Valley committee member, Anne Crozier, writes about her exciting project with a local school.

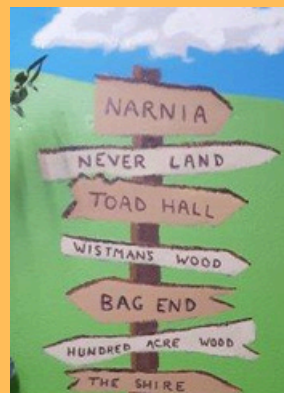
During March, I was approached to see if I would design a school library. A local benefactor had granted funds to transform a tired classroom in Bere Alston Primary Academy into a designated library.

Working on the theme of the Atlantic Rainforest, which follows the banks of the Tamar, I drew up plans and 3D models using characters from children's literature – making sure they all had a book in their hands! Of course I knew all the older books with Paddington, Rupert, etc., but needed to include some modern books, so the Wicked Witch, Matilda and others were included.



Work started in earnest as soon as the children left for the summer holidays. A decorator came in to paint a sky blue ceiling and green landscape for me, so I could then get to work painting clouds and outlining the characters on the walls. An old fashioned projector was invaluable to transfer the images from acetate.

I was fortunate that a team of volunteers from local art groups gave up their time to help. Cork rolls were glued to the walls to form 'tree trunk pin boards' for the children. New carpet was laid; new lighting was installed; and the room was furnished with freshly painted bookcases and 'cushion trees' to store the soft furnishings. A dark window looking onto a corridor was camouflaged with a mock thatched roof, entwined with greenery.



Author Ian Whybrow [Charlie and the Dinosaur books] came all the way from Cambridge for the grand opening in September and the astonished look on the children's faces at the big reveal made it all worthwhile!

Anne Crozier



# Featured Artist - Daphne Leeworthy

Daphne Leeworthy's love of pastels developed on meeting Barry Watkin and Keith Stott after a very late start to painting and struggling with limited success with watercolours. Daphne states, "Monthly meetings with Keith and other students of pastel painting at the Harbour House Studio were a constant joy. His knowledge of colour and his pastels gave him the tools to paint atmospheric paintings of his beloved Dartmoor and gave us much to think about. Sadly Keith has left us and is missed. Getting to know Rebecca de Mendonca has also been special because of her enthusiasm and skill using pastels."



**Evening Glow Pew Tor**



**Emsworthy Bluesbells**

Daphne continues to attempt to develop her own love of landscape, particularly noting changes of light through soft pastel painting and occasionally oil pastels. She draws on her knowledge, gained over past years through sketches and photos of Dartmoor, the coast and many prolonged visits to the Lakes and Northwest Scotland, in order to recall and create images of these special places.



**Last Relections**



**The Wave**



**Light on the Walkham**

Daphne explains why she enjoys working with pastels so much: "Modern pastels offer a huge range of colours from the vivid to lovely soft muted tones. They also offer scope for mark making. The pastel papers available are incredibly adaptable, accepting layers of colours if needed. Many are also resilient if changes need to be made to a painting."

# Workshops

## Saturday Art Workshops with Shari Hills in November 2024 at Ashtorre Rock, Saltash

### Gelli plate printing - Saturday 2nd November from 10.30am until 3.30pm - £30

Discover some of the wonderful possibilities of using a gelli plate. We will be using acrylic paints - the small 2oz/59ml, cheap craft pots will be fine. If you don't already have any, bring 3/4 colours that you like. Also bring; a small gelli plate, a roller and plenty of paper; old calendars/newspaper for rolling excess paint off and some sheets of paper that fit your gelli plate. I like to use the back of shiny A5 flyers. It's good to experiment with a range of different papers to see which effects you like. Any problems/queries about materials, let me know.



### Watercolour Christmas Cards - Saturday 23rd November from 10.30am until 3.30pm £30

A lovely, creative and colourful day, looking at a range of ideas for creating simple but effective watercolour Christmas cards. An opportunity for some sparkly bits and some white gouache. Bring your usual watercolour kit and any little bits you have been squirreling away for a rainy day!

### Information for both Sessions

Please bring some food to share for a simple buffet lunch. Hot drinks are available downstairs in the café all day, or you can make your own in the upstairs' kitchen. There is a lift to access the classroom.

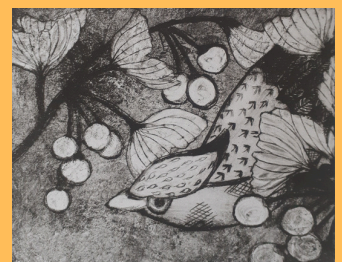
Please book your space by emailing [shari.hills@hotmail.com](mailto:shari.hills@hotmail.com)

Payment on the day by cash or card.

---

## Tetrapak Printing Workshop at the Makers Gallery

Hard to imagine that this stunning image was created from a fruit juice carton! Gilly Spottiswoode will be running a workshop on tetra pak printing at the Makers Gallery in Tavistock on Sunday 3rd November. Cost for the day is £30. There will also be the opportunity to see the wonderful selection of contemporary crafts that the Gallery stocks, including guest exhibitors Jess Maslin and Jillian Morris.



# Updates from Tamar Valley National Landscape

**Tamar Valley National Landscape have forwarded this press release from Salt Arts CIC, which may be of interest to DttV members and subscribers alike.**

Saltash will soon be home to a brand-new creative hub on Fore Street. The Saltash Studios project will bring the former Barclays Bank building back into use for the whole community.

Saltash Studios will offer accessible studios and co-workspace for creative industry professionals alongside an evening and weekend events and activities programme. The Studios will be a centre for all local people who have an interest in the arts and a hub for inspiring and fun creative activities and enterprise.



The flexible workspace aims to inspire collaboration and innovation between professionals. Funded residencies will also be available to support young people and other groups such as carers and veterans.

Saltash Studios is being developed by local social enterprise Salt Arts CIC, who are building on the success of their other projects including Saltash Songs & Shanties Festival which attracted nearly 3,000 people to events in 2024.

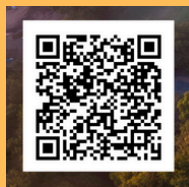
Lindsay Endean, Salt Arts CIC Director says: "Saltash Studios will provide space for professionals in the creative industries including artists, publishing, designers, crafts people, content creators, fashion, digital creatives, performing arts and more. The co-work hub and studios will welcome established professionals alongside people looking to change career or start a new career.

The Studios will also run an exciting public events programme and hope to bring exhibitions, screenings and creative workshops to Saltash."



To find out more about Saltash Studios see [www.saltarts.org](http://www.saltarts.org).

**FREE weekly walks  
every Monday,  
Wednesday &  
Thursday**



**Have your say on Tamar  
Valley National Landscape's  
Management Plan  
2025-2030**

**Consultation closes 1st  
November 2024  
[www.tamarvalley-nl.org.uk](http://www.tamarvalley-nl.org.uk)**

## **Join Tamara Landscape Partnership on Saturday 26 October in Calstock for the Tamar Valley River Festival!**

The River Festival is a great opportunity to showcase and celebrate 'Life Along the River', its unique heritage, culture and biodiversity.

For more information go to: [Tamar Valley River Festival](#)

DttV member, Shari Hills, is looking forward to taking part in the **Tamar Valley River Festival** on Saturday 26th October in Calstock. She will be running Brusho-pigment sessions on the river theme of egrets and herons.



# COMMITTEE - WHO'S WHO



**Ali Fife Cook**  
Chair



**Jess Maslen**  
Vice Chair



**Anne Payne**  
Treasurer



**Anne Crozier**  
Committee  
Member



**Lucy Griffiths**  
Committee  
Member



**Sonia Hicks**  
Committee  
Member



**Michael Jenkins**  
Committee  
Member



**Debra Parkinson**  
Committee  
Member



**Stuart Morrissey**  
Committee  
Member



**Adrian Bower**  
Administrator



## WHO IS YOUR AREA REP?

**BUDE/LAUCESTON/LIFTON**  
PL15, PL16, EX22 & EX23  
Sophie Fordham  
sophie@fordhamsrgo.plus.co  
01566 772674

**RAME PENINSULA/SALTASH**  
PL10, PL11 & PL12  
CURRENTLY VACANT

**CALSTOCK/GUNNISLAKE PL18**  
Peter Ursem  
peter@peterursem.co.uk  
07786 558624 or 01822 833668

**TAVISTOCK PL19**  
Anne Wood  
mrs.annewood@btinternet.com  
01822 615587

**CALLINGTON PL14 & PL17**  
Rebecca Nesbit  
rebeccanesbit@gmail.com  
07931 179516  
Shari Hills  
shari.hills@hotmail.com  
07931 179516

**WEST DEVON VILLAGES**  
Angela Smith  
moritzsmith@hotmail.com  
01822 810154  
Jen Bradley  
jenbradleydesigns@gmail.com  
01822 618957

**PLYMOUTH PL1-PL7 & PL9**  
Jane Athron  
07758 950095  
jathron@yahoo.co.uk  
Clare Rogers  
Clare@thejollyrogers.co.uk  
07974 500910

**YELVERTON PL20**  
Anne Crozier  
anne@leighfarm.co.uk  
01822 840270