

Drawn to the Valley

What's in store for 2022?



Inside this Issue

Editor's Note.....	2
Featured Artist.....	3-4
What's On.....	5
News from our Members.....	6
20 years of Delamore.....	7
Water Mixable Oils.....	8
Sound Healing.....	9
Christmas Marketing.....	10
Renewing your Membership....	11
Notices & AGM.....	12-13
Your Committee.....	14

MISSION STATEMENT

Drawn to the Valley provides a great network for artists, a way of keeping in touch and exhibiting work inspired by their passion for the beautiful Tamar Valley area and beyond.

OUR VISION

Drawn to the Valley group is an artist led initiative, membership is open to professional artists and craftspeople living and/or working in the Tamar Valley area. Drawn to the Valley was formed by the artists themselves over a decade ago, mainly as a support network, but also in order to promote the Tamar Valley area, bringing the area of natural beauty to life through art.

We encourage content for the newsletter, do email us your news. Please share your news and latest work on our social media pages:
facebook.com/Drawn-to-the-Valley
Twitter - Drawn 2Valley
Instagram - #drawntothevalley



Administrator: Ren Jackaman

Tel: 07878 368857

contact@drawntothevalley.com

Address: Drawn to the Valley

The Tamar Valley Centre, Cemetery Rd,
Drakewalls, Gunnislake PL18 9FE

With Christmas around the corner, it is time to reflect on the last 12 months and prepare for an exciting year to come for Drawn to the Valley Artists. It has been a difficult year with the Covid infection still being prevalent in our community. Having said this, since this time last year the group has held three very successful exhibitions, despite the problems associated with running such events during a pandemic.

Despite the challenges we face, Drawn to the Valley is going from strength to strength with more members than ever in the history of the group. The new website is up and running, with 151 members galleries to be viewed and 539 individual pieces of art for sale. You can see a small selection of the artwork for sale depicted below. Don't forget to point friends, family and followers in the direction of www.drawntothevalley.com for their Christmas shopping!

We look forward to a really successful 2022, starting with the Spring Exhibition in the last week of March (venue tbc), then the Summer Exhibition in August, another Drawn to Make in October and a Winter Exhibition coordinated in partnership with the Tamara Project. In addition, we will be organising the Open Studios as usual and lots of workshops as part of the Battling On Project.

The team would like to give thanks to all our members for continuing to make this such a brilliant group to be part of and to all the people who have supported our events, visited our website, signed up to the newsletter or supported us in any other way. We could not do it without you.

We would like to take this opportunity to wish you all a very Merry Christmas and a Happy New Year.



BLUE CHRISTMAS

Just some of the 539 pieces of unique art available for sale via the website.

Find paintings, jewellery, textiles, ceramics, prints, glasswork...

Visit the Drawn to the Valley online [GALLERY](#) for more.

NOTES FROM YOUR EDITOR



In mid-July 2022, Stoke Climsland is putting on an adapted production of the Hobbit, 'A Hobbit's Tale - the shire awakens'. The producer, David Oddie writes, "It struck me that the story is actually an ecological parable for our times with its themes of greed, power, exploiting the earth and also loyalty and bravery."

This is community based, involving local groups of all ages and I am putting together an Arts team. We'd welcome anyone who has experience, or who loves to make things - 3d ish - painting too, and if you like to join a fun group or just a single workshop, do let me know.

The project is getting extended to include a Climate Fair on Saturday 16th July, after 3 performances of the play. There will be information on energy, transport, waste management and agriculture - home produced wares may well be on the agenda, with emphasis on sustainability and environmental/ecological consistency - if any of this whets the appetite for your joining in, do contact Mel.

Another AGM over and the whole out-going and in-coming DttV teams are already into wishing you all a great seasonal time. Let's look towards a few jingle bells and sleigh rides to equalise our weather this winter!

Onto next year - the exhibitions programme is being addressed already and here is an announcement about a Tamar Valley event, which might help us all to emerge from these last strange years and excite some members to get involved next year.



ABOVE:

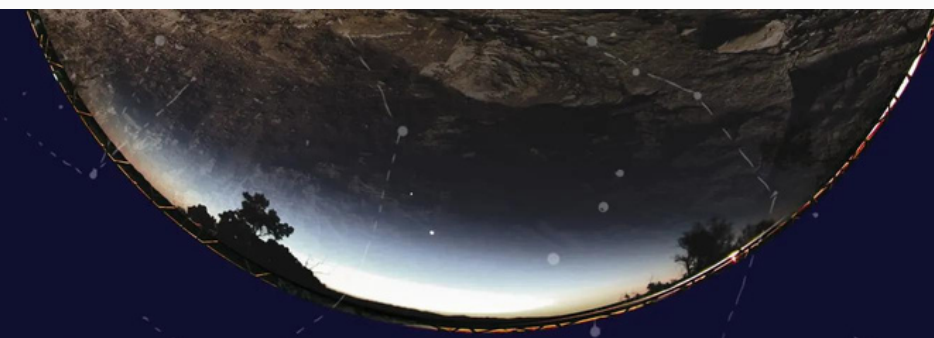
A bit of Hobbiton inspiration from artist Soni Alcorn-Hendra. Soni has Devonian roots but now lives and works in Portugal.

She specialises in creating works based on Fairytales, Folklore and Fantasy.

You can see more of her work at her website:

<https://bohemianweasel.com/>

Copyright .Bohemian Weasel 2017



Songlines
TRACKING THE *seven Sisters*

The Box in Plymouth presents
"Songlines - Tracking the Seven Sisters"

An excellent exhibition of contemporary aboriginal art,, expressed in many different mediums - painting, ceramics, light, sculpture, 3D film .

Runs from 21 Oct 2021- 27 Feb 2022

Open Tuesdays to Sundays and Bank holidays. The Levinsky Gallery will be closed for Christmas from 20 Dec 2021- 3 Jan 2022 (inclusive).

Featured Artist – Angela Newberry

I started collected birds eggs, caterpillars and frog spawn, when I was six, at seven I had Saturday morning art classes and learnt how to make pillow lace – so my interests in art and nature started at an early age. The wonders of nature are my inspiration.

I trained at Kingston and Wimbledon Schools of Art before going on to the Royal College of Art in South Kensington. I married an architect and together we built the first all glass house in England at Capel in Surrey, called Panshangar. The subsequent publicity helped to launch our careers. I was designing interiors and exhibition stands for architects and won the Vogue Talent Contest, which led to a spell working for publishers Condé Nast and for Queen magazine. We had four children and when the marriage split they were aged from one year to eight.



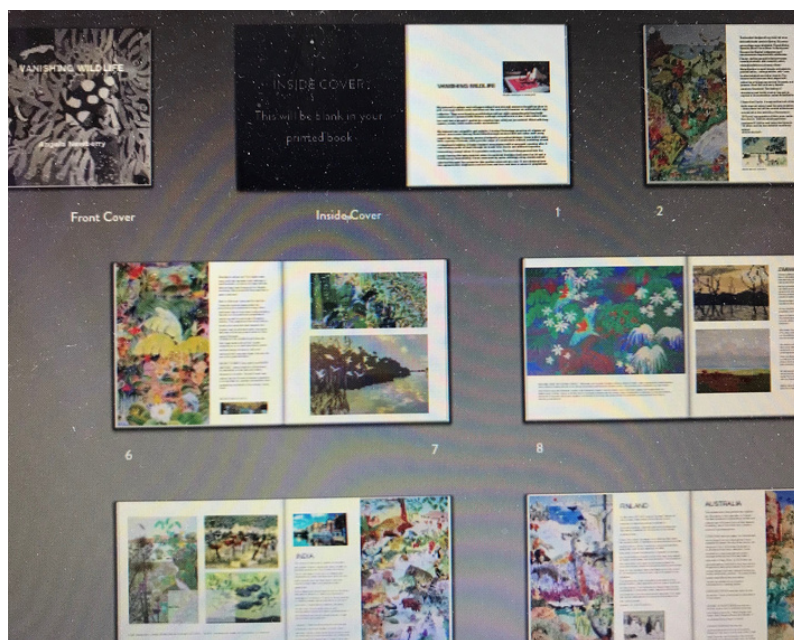
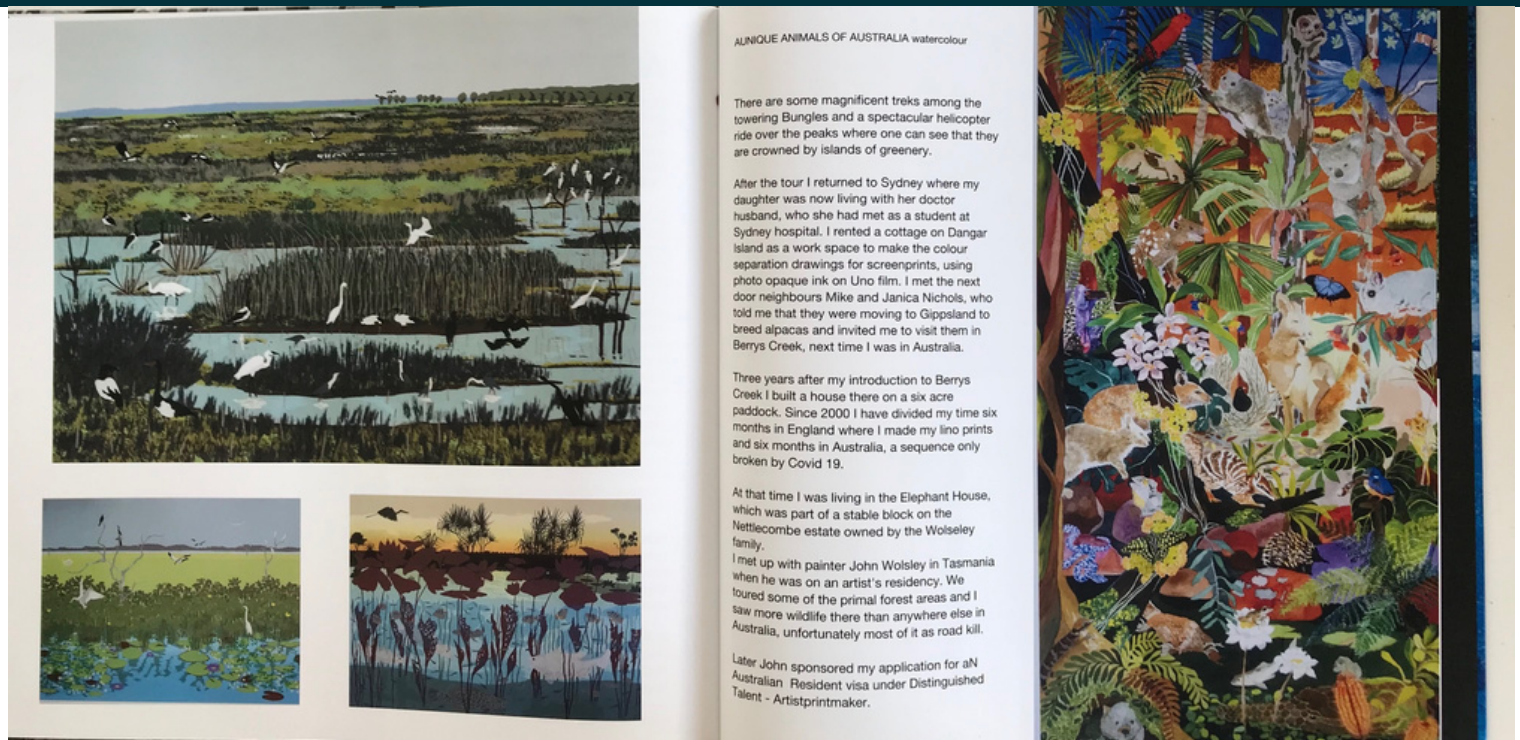
I took them to Cape Town for a year to work on the interior of an hotel for the South African Breweries, but apartheid drove us back to England. I had always split my time between writing and art and when my youngest son started full time school, I went back to being a student at the London Film School, as a script writer. After a year I was invited to join the staff for what proved to be a wonderful job which lasted through the school years of the children and involved students from twenty two different countries around the world, who came from many different backgrounds.

I was offered a writer-in-resident appointment at the Sydney Film and Television School, this was my first visit to Australia. When I returned to London my old job was no longer available, at which time old friends suggested that I renew my interest in art. So after a Summer refresher course at Falmouth School of Art I bought a small hydraulic press and set up shop as a printmaker in linocuts. I was fortunate in that one of my old tutors Julian Trevellyan, husband of the painter Mary Fedden, lived in the same street and when they opened their studios with the annual Open Gardens event in Hammersmith Terrace and Chiswick Mall, they invited me to join in. Their clients came on to see me and so it was that my new career as a printmaker got off to a flying start.

While living in London we exchanged houses with American families and went camping in the Yosemite National Park. This sparked my interest in wilderness areas and gave my children the travel bug. We have ended up on different continents, two sons in England, one in Spain and my daughter in Australia. So I have been the one commuting from England to Australia in order to get to know my grandchildren and to make screenprints in Melbourne and linocuts in my own studios in Somerset and Kent before moving to Cornwall and exhibiting prints in both countries.

When Covid struck I was in Australia, a big country with a scattered population, able to shut both internal borders and stop International flights. Australians stranded overseas are now beginning to come home and I hope to return in March 2022. In the meanwhile have just had a solo open studio event and was able to welcome visitors after many months of lockdown..

Featured Artist – Angela Newberry



Q. What's your favourite book and/or film?

A. Too many to choose from but I am seriously in awe of Hilary Mantel for her Wolf Hall trilogy, her scholarship and power of imagination able to draw the reader into the total evocation of scene, the room the furniture the wall hangings the time of day and of season, together with the characters their rich appearance, clothes and jewels, their mood and the undercurrent of threat and intrigue of the period and of the story.

IMAGES:

Page layouts from VANISHING WILDLIFE showing animal prints together with the back story of wilderness travels.

Q. What's the best work related thing you have done recently?

A. I have produced a book of my animal prints and watercolours called Vanishing Wilderness with the back story of my travels. Blue Island Press in Sydney have produced a 2022 Calendar twelve of my linocut landscape prints, on heavy weight art paper. These have been selling well at an exhibition locally which still has a week to run.

Q. Where's your favourite place?

A. the beach where I walk everyday.

Q. Who would you most like to meet (anyone dead or alive)?

A. David Attenborough is both the person who I would most like to meet and my hero for doing so many of the things that I would like to have done and leaving the unique legacy of his many wildlife films.

Q. What irritates you?

A. the damaging side of social media to people who allow their emotional wellbeing to depend on likes, who are vulnerable to coercion and become the victims of hateful abuse, by anonymous trolls if they step out of line in freely expressing their thoughts.

WHAT'S ON

Gresham House Studios Annual Winter Fayre

In the weekend of 11 and 12 December, Helen Porter and Peter Ursem will hold their annual winter fayre at Gresham House Studio Gallery, PL18 9AB (Off 'Well Park Road').

Running for the fourth consecutive year, the Gresham House Fayre is the perfect place for local Christmas shopping, where you will find a wide range of small home-made products, from hand-printed cards, colourful knitted socks, lavender pouches and garden sticks to marmalades, chutneys or sourdough crackers. Tavistock maker/mender Jennie Peach joins the fayre this year with colourfully sewn creations, and there will be some surprise articles, too.

Due to the studio lay-out and ventilation the Gresham House Fayre is a safe place to browse. Visitors will be treated to mince pies and a warm drink.

Open both days, from 10am to 4pm. You can preview and pre-order most gifts on the website shop on:

www.greshamhousestudios.co.uk

For information email to info@greshamhousestudios.co.uk



HOMEFRAME CHRISTMAS EXHIBITION

OPENING SATURDAY 4TH DECEMBER

2pm - 6pm

COME AND JOIN US FOR WINE, CHEESE
AND HOMEMADE MINCE PIES

ALL NEW WORK BY LOCAL ARTISTS
RUNS UP TO CHRISTMAS EVE

01752 261439/07912531247



News from our Members

ADRIAN EDWARDS

Adrian exhibits at the Callington School of Art Dttv Open Studios as well as Tessa Sulston who runs the School and they were both exhibitors at the recent South West of England Academy of Fine and Applied Arts Open Exhibition held at Kennaway House, Sidmouth.

Adrian Edwards was awarded the Brownston Gallery Award, which was a cash prize, and his work, including 'Wandering back' (illustrated) will be exhibited at the Gallery at Modbury, Devon.



ABOVE: 'Wandering Back' by Adrian Edwards



ANNE BLACKWELL-FOX

Anne has got some of her paintings in the 'Homeframe' Gallery, Union Street, Plymouth in the Christmas Exhibition, which opens on the 4th December between 2 p.m. - 6 p.m. (see the flyer on page 6 Whats On section).

Anne would like to invite you all to please come along for a festive glass and mince pie to see this mixed Christmas show.

LEFT: 'Deep Pool' by Anne Blackwell-Fox

BATTLING ON - Project update

The Battling On workshops have been a great success and here is a quote from Launceston Medical Centre:

"I have heard some lovely feedback about 'Drawn to the Valley' from service users. How well organised and fun it is. It seems to be making a real difference."

The impact on some participants who have joined in with the events has been tremendous and this is because many of them need their confidence built or their wellbeing addressed.

Are there any more of you artists out there who can offer a distraction for communities? It provides a real purpose and satisfaction for all concerned.

Contact [Sue Coleman](#) to offer help with this, at realistic rates of pay.

20 years of Delamore Arts!

OVERCOMING MS
7 Steps in a Blink... and Move!

What is OVERCOMING MS?

Overcoming MS (OMS) is a global nonprofit, and registered charity in the UK, USA, and Australia. OMS is an independent and unbiased charitable organization, and does not accept any financial or "in kind" support from pharmaceutical or other companies where there may be a conflict of interest.

MS FACTORS

MS is now considered a chronic Western disease, with progression influenced by lifestyle factors.

Here's what impacts MS:

- VITAMIN D**
Low levels of sun exposure
- GENETICS**
Comprises 25% of the risk of getting MS
- SATURATED FAT**
Diets high in saturated fat including meat and dairy
- STRESS**
- SMOKING**

The OMS MISSION

To educate, support and empower the global MS community in evidence-based lifestyle and medication choices that improve health outcomes.

MS FACTS

MS affects **3 TIMES** AS MANY WOMEN AS MEN ALTHOUGH WE DON'T KNOW WHY

Over **2.5+ MILLION** people worldwide have MS

MS is typically diagnosed between the ages of **20 AND 40**

What is the 7-Step OMS RECOVERY PROGRAM?

An evidence-based and rigorously researched diet and lifestyle modification approach developed by Professor George Jelinek, an award-winning doctor and professor of medicine. Prof. Jelinek is the current Head of the Neuroepidemiology Unit (NEU) within the Melbourne School of Population and Global Health at The University of Melbourne.

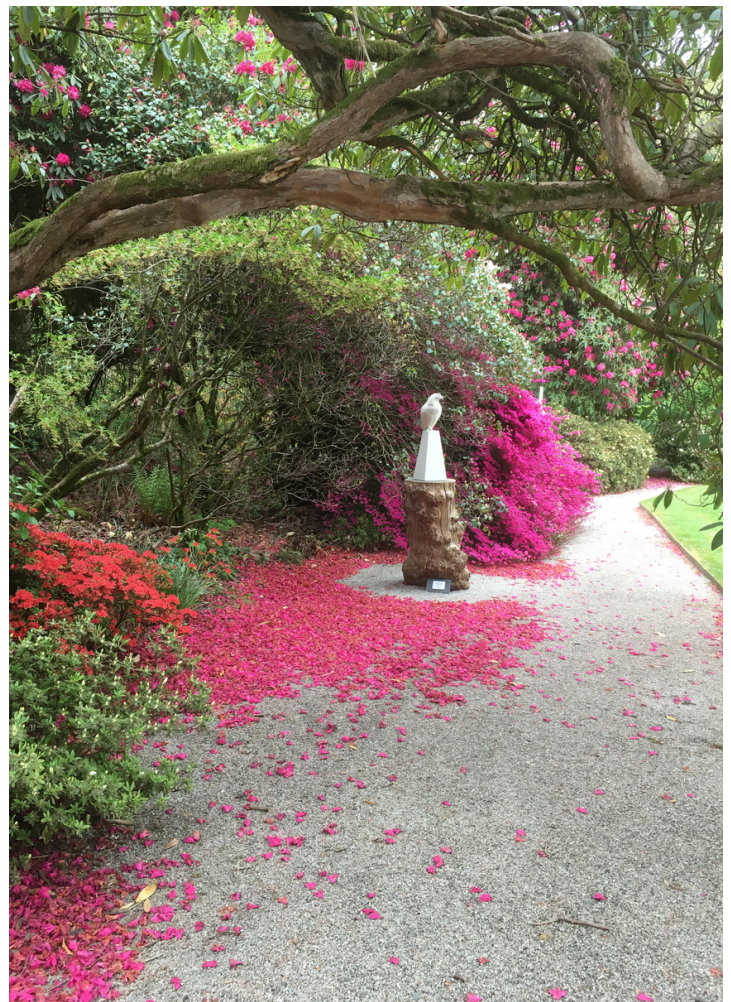
I am an ambassador for Overcoming Multiple Sclerosis, the worlds leading multiple sclerosis healthy lifestyle charity. Although there is currently no cure for MS, we believe that people with MS can lead positive and fulfilling lives. This belief is based on substantial scientific evidence of the benefits of holistic self-care, alongside medical therapies when appropriate and I am thrilled that in it's 20th Year Delamore Arts has chosen our OMS charity to support. The Delamore Gardens have inspired and restored me time and time again. I am trying to draw a wider community and raise awareness throughout May whilst the exhibition and sculpture trail takes place by creating a programme of exciting talks, trails, workshops etc. I am looking for artists interested in running a small workshop, giving a talk or supporting in any way they feel able.

There will be a silent postcard auction so if you have taken part in Delamore over the last 20 years why not create a standard size postcard to donate for the sale. All profits will go to OMS and help fund their continued research and support of all those living with MS..

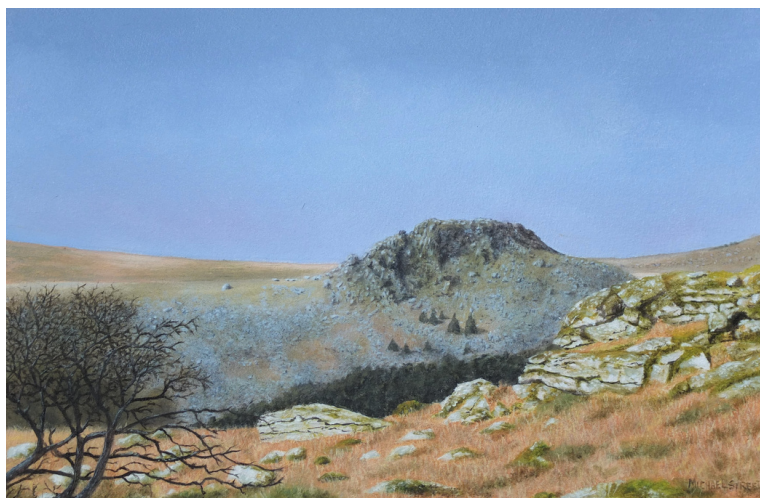
OMS understands that living with multiple sclerosis can be overwhelming – but there is realistic hope of living well.

Over 2.8 million people worldwide live with multiple sclerosis, with many experiencing progressive disability over time. The Delamore Gardens have inspired and restored me time and time again. OMS has given me an extended family of support, a wealth of knowledge, the strength, will and hope that my life is going to be ok. I want to bring this stability and reassurance to more. I am trying to draw a wider community and raise awareness throughout May whilst the exhibition and sculpture trail takes place by creating a programme of exciting talks, trails, workshops etc. I want to raise as much as possible with the postcard auction so hope you feel able to give a little time, some of your skill and ability to create beauty and joy by creating a post card for the auction. It can be any media; wood, metal, paper, textile... whatever!

Contact Tessa Jane on 07866660840 or tessajanedesigns@gmail.com. Thank you



Water-Mixable Oil Paints - Mike Street



I have painted happily for over 20 years using watercolours as my only medium, but two years ago I changed to using Water Mixable Oils, the first time I have used oils for over 50 years! Why the change? My reason was relatively simple – I was shown that they might be easier for my style of landscape painting.

In February 2019 I watched as a brilliant landscape artist in Dunedin, NZ, painted in a block of rich dark blue-green for a stand of pines along the back of a lake shoreline, with snow covered sunlit mountains towering behind them. He then very simply stippled in golden highlights on the lit, sunny side of each tree, making them appear as if by magic from the green background. I remarked that he made it look so easy, adding that, in watercolour I would have had to plan those highlights carefully in advance, and would need to leave white paper or light colour for them. His response was a wry smile and, 'yes - you watercolourists do it all back to front'.

I saw at once what he meant and could see how much more control he had over the application of the paint than I had with watercolour, so when back home I considered using oil paints for my landscapes. That's when I discovered Winsor & Newton 'Artisan' Water Mixable Oils - no unpleasant solvents, and brushes can be cleaned with water. I bought a basic colour palette plus some water mixable mediums (linseed, stand oil, fast drying medium and thinners) and after watching a few videos about them, I started playing with them, learning to make colour mixes and - more important – enjoying the process.

I have continued to use them since and find them easier than watercolours to control, they are more predictable, easier for painting fine details, and extremely easy to blend. So what are they? They are exactly the same pigments as conventional oils, but with an additive that makes them able to mix with water, removing the need for toxic and smelly hydrocarbon solvents.

So they are more pleasant to use than traditional oils and are a safer alternative for the artist and the environment. You can paint with WMOs straight from the tube without extending them with the water-mixable mediums as you can with conventional oils but afterwards, as above, you can clean up easily with just washing-up liquid and water. If you paint 'alla prima' there is no need to bother about the 'fat over lean' principle as your painting will effectively be one layer.

However, I paint in thin successive layers and so I have developed a habit of painting a quick drying base layer using a 75:25 mix of solvent (thinners) and fast drying medium, then increasing the proportion of the oily medium in successive layers as I add the details. My final layer is often a glaze, using pure stand oil as the medium.

Like traditional oils, paintings need several weeks to 'dry' fully before a final coat or two of varnish. If you paint in traditional oils and have not yet tried the water mixable ones, I can thoroughly recommend that you give them a go.

This is a very brief description, for more information about water mixable oils and the brands available, you could have a look at the website of the 'Society of Painters in Water Mixable Oils' www.spwmo.org.uk or read the articles by Julie Caves on the 'Art materials & Techniques' pages of Jacksons Art Blog www.jacksonsart.com

PICTURED ABOVE:
Lether Tor on Dartmoor by Mike Street

Sound Healing with Teresa Wicksteed



This year I have re-opened my Yurt for individual In-Person Sound Healing. I am still practising Distant Healing too. At the same time, new opportunities opened up for me to spread the word about how sound can relax and balance us.

A local Yoga teacher, Sarah, invited me to run sessions for her Residential Retreat participants, and I have carried out four of these, for groups of average ten people (all ages, from across UK and abroad.) Sarah wrote this:

“Teresa’s group workshops are the perfect way to introduce a group of like-minded people to the subtle, yet profoundly powerful therapies of sound healing. More than just a sound bath, Teresa delivers interactive sessions in a safe and non-judgemental environment, introducing you to a range of sounding methodologies, including the voice and her beautiful hand-crafted instruments. These are then played for the individual, guided by intuition, allowing for a deeper level of transformation to take place. Her passion ignites within you a sense of wanting to explore more and you leave the session feeling calm, clear and present, energised yet peaceful – the gift that heals on all levels.”

Teresa Wicksteed, MA, BA Hons, PGCE, MCSH, MCMA
teresa@teresawicksteed.co.uk



CHRISTMAS MARKETING

SOCIAL MEDIA & YOUR WEBSITE

The Drawn to the Valley website now contains:

151 artist profiles and galleries

579 items for sale

39 artists offering commissions

The Social Media team intend to promote the website in the lead up to Christmas. You can help by posting links to your website profile on your own social media.

THERE ARE LOADS OF HASHTAGS YOU CAN USE:

#supportyourlocalartist #shoplocal #buylocal #unique #bespoke
#shophandmade #christmasgifts #christmasgiftideas
#artforyourwall #artforyourhome #painting #print #textiles
#photography #artlovers #ceramics #glass #wood #jewellery
#tamarvalleyart #tamarvalleyartists #artistsupportingartists
#cornwallartists #devonartists #tamarvalleyart #tamarvalleyartist
#decemberinthevalley #christmasinthevalley #DTTV

IF YOU DO NOT HAVE A PROFILE ON THE WEBSITE...

Log in, go to the members menu and select the option to set up your profile

IF YOU NEED TO UPDATE YOUR GALLERY, ADD OR REMOVE ITEMS...

Log in, go to members menu and select the option to update your profile

IF IN DOUBT - PLEASE EMAIL REN ON:

contact@drawntothevalley.org

MERRY CHRISTMAS!

WEBSITE STATISTICS

At the AGM in November, one of our members requested that the newsletter include a monthly statistical analysis of the Drawn to the Valley website traffic. Here are the statistics for November.

Users: 563

New Users: 527

Sessions: 680

Number of Sessions per User: 1.21

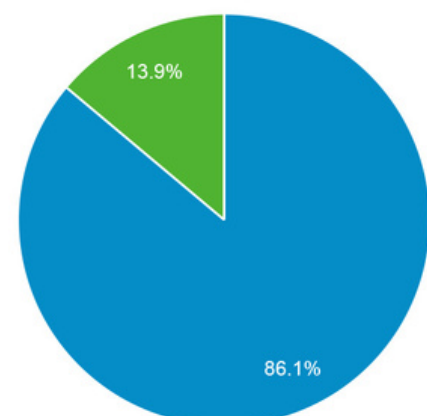
Pageviews: 3,164

Pages / Session: 4.65

Avg. Session Duration: 00:02:51

Bounce Rate 54.26%

■ New Visitor ■ Returning Visitor



RENEWING YOUR MEMBERSHIP

what are your options?

As you probably already know, over the last 12 months it has become possible for membership applications to be processed via the website. This has opened up the possibility to join or re-join Drawn to the Valley at any time of the year, rather than limiting applications to January of each year.

If your membership was processed via the website, you will be sent an autorenewal notice at the end of the year of membership. This has simplified everything considerably. Having said this, the majority of memberships still renew in January.

In previous years, every current member was contacted with an invoice for the next year of membership and offered the option to pay by BACS, cheque or via the website. For anyone who paid via the website for their membership in January 2021, you need not worry as you will receive your autorenewal in due course.

If you paid by BACS or cheque in January 2021, then you will still receive an invoice. As usual, you can pay by BACS, cheque or, if you prefer, you can pay via the website and relax until you receive your autorenewal 12 months later.

Ren will be in touch with all current members to remind everyone of the renewal process in due course.

If you have any questions, or if you do not wish to renew your membership in 2022, please let us know as soon as you can by emailing contact@drawntothevalley.org

Can you help us?

There are always some roles which members can play in helping the committee and administrator to help us organise events and communicate with members.

The committee are currently looking for volunteers in the following roles:

- Area Representative for Calstock & Gunnislake*
- Area Representative for Callington (to work with one other)*
- Spring Exhibition Working Party
- Open Studios Working Party
- Working Day & Social Events Working Party

The Spring Exhibition is entering the planning stages and we need to set up a working party to help coordinate. If you are interested please contact Juliet Cornell on julietcornell@gmail.com

The next Open Studios takes place in August/September 2022! It is time to start planning.

Area reps are asked to make contact with the members who are under their wing, to start a process which will, by mutual agreement, decide where the best trails will be around the area. This agreement will be the substance of the content of the brochure for OS later in the year.

If any of the above interest you, please email Ren on contact@drawntothevalley.org for more details of what is involved.

*Note that Area Reps benefit from a 50% discount on membership fee

NOTICEBOARD

British Art Show 9 confirms new dates


New dates for the UK's most influential contemporary art exhibition, British Art Show 9 (BAS 9), have been confirmed – with Plymouth University set to host part of the programme in 2022. The nationwide tour will culminate in Plymouth from 8 October to 23 December next year, following its residences in Aberdeen, Wolverhampton and Manchester.

Held every five years to showcase the work of British artists who have made a significant contribution to international contemporary art, BAS 9 will be shown across four city venues – The Box, KARST, The Levinsky Gallery at the University and The Gallery at Plymouth College of Art.

Forty-seven artists have been selected following extensive research by curators Irene Aristizábal and Hammad Nasar. They include Turner Prize winners and bursary recipients and artists who have represented Britain at the prestigious Venice Biennale. Many of the artists are developing new works for the exhibition, which will include sculpture, film, installation, performance, painting and photography.

Are there any Canary Craftivists out there??

**There were no answers to my call out in the newsletter a few months ago.
Please let the editor know by emailing contact@drawntothevalley.org**



**We don't stop
playing because
we grow old, we
grow old because
we stop playing**

www.alastairguy.co.uk

Drawn to the Valley 2021 AGM

The AGM was held on 23rd November using remote access software in order to safeguard the health of attendees during a period of rising Covid 19 levels.

Microsoft Teams was suffering technical difficulties on the evening of the AGM, these glitches were not local and were beyond the control of anyone at the meeting to mitigate. This resulted in many members who wanted to attend being unavoidably excluded (including at least one member who wished to be nominated to the committee). Only 15 people were able to attend and the constitution details the quorate number is 10% of membership which would be 19.

The Committee has considered this unfortunate series of events and has concluded that the constitution was not drafted with either a pandemic or access to remote software in mind. The constitution is not governed by any legislation, as Drawn to the Valley has no company, charitable or other administrative profile which would render it liable to legislative control. Any additional or repeat attempt to hold an AGM would also need to be held remotely (which meeting might reasonably be expected to have the same technical issues). The committee has therefore concluded that the circumstances of the AGM constitute 'Force Majeure'.

In light of the above considerations, the committee took the decision that it would be unreasonable to ask membership to attend another AGM event and that the opinions of those members who wished to attend but were unable to do so on the 23rd November 2021 be sought and recorded in the minutes for ratification purposes. This option included the opportunity to ask questions, make comments and request or offer nominations for committee as if from the floor of the meeting. In total 11 responses were received and all decisions were ratified accordingly.

Following the AGM we are now able to welcome four new committee members:

Jayne Ashenbury

Anne Payne

Debra Parkinson

Stef D'amico

The update AGM Minutes have been forwarded to all members on the 5th December. It is too late to add your views on the items to be ratified but if ever you have a query about procedures, governance or anything else, please email contact@drawntothevalley.org and we will endeavour to help.



DEPICTED LEFT:
The 2020 AGM, when remote meeting was a novelty and the technology worked relatively smoothly. Fingers crossed for a more successful AGM in 2022, when we may be able to meet face to face instead.

COMMITTEE - WHO'S WHO



Sue Coleman
Joint Chair &
Sponsorship/
Fundraising
Coordinator



Juliet Cornell
Joint Chair &
Social Media
Coordinator



Gilly
Spottiswoode
Treasurer



Lyn Edwards
Outreach
Development
Coordinator



Kathy Lovell
Committee
Member



Stef D'amico
Committee
Member



Anne Payne
Committee
Member



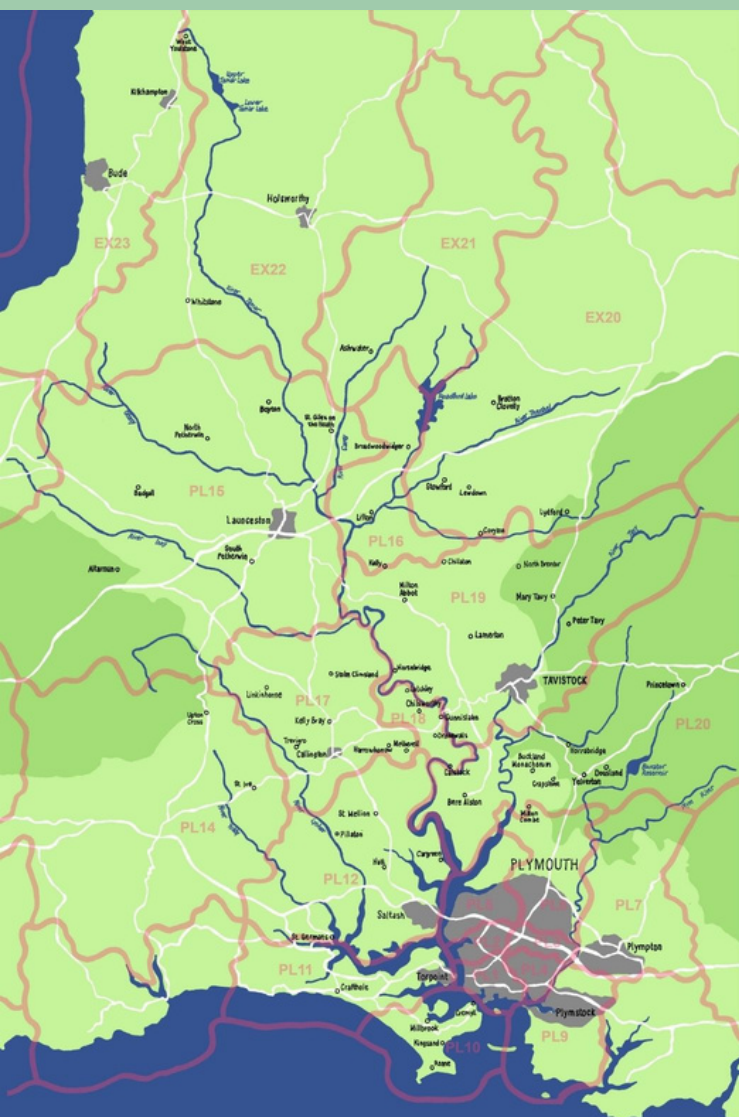
Jayne
Ashenbury
Committee
Member



Debra Parkinson
Committee
Member



Ren Jackaman
Administrator



WHO'S YOUR AREA REP?

BUDE/LAUNCESTON/LIFTON:

PL15, PL16 & EX23

ANITA TOWNSEND

mongoosemoondaisy12@gmail.com

01822 860123

GUNNISLAKE/CALSTOCK: PL18

CURRENTLY VACANT

Can you help?

email:

contact@drawntothevalley.org

SALTASH: PL12

JOANNA SHEPHERD

hello@mrsmarvellous.co.uk

07721 453385

TAVISTOCK: PL19

KATY CHOROSZEWSKA

katycho@icloud.com

01822 612694

RAME PENINSULA: PL10 / PL11

CHARLOTTE SAINSBURY

casainsbury@hotmail.com

01752 658737

YELVERTON: PL20

ANNE CROZIER

anne@leighfarm.co.uk

01822 840270

PLYMOUTH : PL1 – PL7 & PL9

MARY TOON

maryfeltamazing@yahoo.co.uk

01752 651746

JILLIAN MORRIS

info@jillianmorris.co.uk

01752 210401

CALLINGTON: PL14 & PL17

REBECCA NESBIT

rebeccalnesbit@gmail.com

07866 423525

REN JACKAMAN (temporarily)

contact@drawntothevalley.org

07878 368857

WEST DEVON VILLAGES: EX20 & PL19

SALLY O'NEILL

nielsally83@hotmail.com

01822 860263