

DRAWN TO MAKE

Festival of contemporary makers



BUTCHERS' HALL, TAVISTOCK

29TH and 30TH OCTOBER 2021

Friday 10am -6pm Saturday 9.30am – 5pm



At the end of this month Butchers Hall in Tavistock will showcase the work of the many talented Makers that are members of Drawn to the Valley.

This is a new event on our calendar and promises something quite different to our already successful exhibitions. An exciting new layout has been designed to create bench booths as well as floor standing alcoves.

In total 45 exhibitors are taking part with a diverse and unique selection of quality exhibits. Ceramicists and Printmakers, Weavers and Spinners. Glass Artists, Textile Artist and Jewellery Makers to name but a few and it will be the perfect opportunity to buy unique gifts for Christmas.

If you missed out on this year be sure to put next year's event in your diary: October 28th- October 29th 2022.

Please see the next page for some examples of the works which will be on show.

The Drawn to Make Exhibition is FREE
You can view the Drawn to Make catalogue
by clicking on this [LINK](#)



Inside this Issue

Drawn to Make.....	1-3
Featured Artist.....	3-4
Members News.....	5-7
Welcome to new members.....	8
Opportunities.....	9-11
Open Studios Feedback.....	12
Your Committee.....	13

MISSION STATEMENT

Drawn to the Valley provides a great network for artists, a way of keeping in touch and exhibiting work inspired by their passion for the beautiful Tamar Valley area and beyond.

OUR VISION

Drawn to the Valley group is an artist led initiative, membership is open to professional artists and craftspeople living and/or working in the Tamar Valley area. Drawn to the Valley was formed by the artists themselves over a decade ago, mainly as a support network, but also in order to promote the Tamar Valley area, bringing the area of natural beauty to life through art.

We encourage content for the newsletter, do email us your news. Please share your news and latest work on our social media pages:
facebook.com/Drawn-to-the-Valley
 Twitter - Drawn 2Valley
 Instagram - #drawntothevalley



Administrator: Ren Jackaman

Tel: 07878 368857

contact@drawntothevalley.com

Address: Drawn to the Valley
 The Tamar Valley Centre,
 Cemetery Rd, Drakewalls,
 Gunnislake PL18 9FE

**REMINDER: COPY DEADLINE IS ALWAYS THE LAST DAY OF THE MONTH,
 PLEASE CONTACT THE EDITOR - MEL GUY WITH RELEVANT ITEMS**

Drawn to Make – a sample of works



TIMOTHY MILLER – Painting



JANET BRADY – Painting



JANE DEANE – Textiles



BEV MOODY – Textiles



IAN PALFREY – Glass



REBECCA NESBIT – Jewellery



DIANA THOMPSON – Textiles



JOHN ROWE – Maker



NICK PALMER – Painter



SUE JOHNS – Glass

Featured Artist – Gilly Spottiswoode

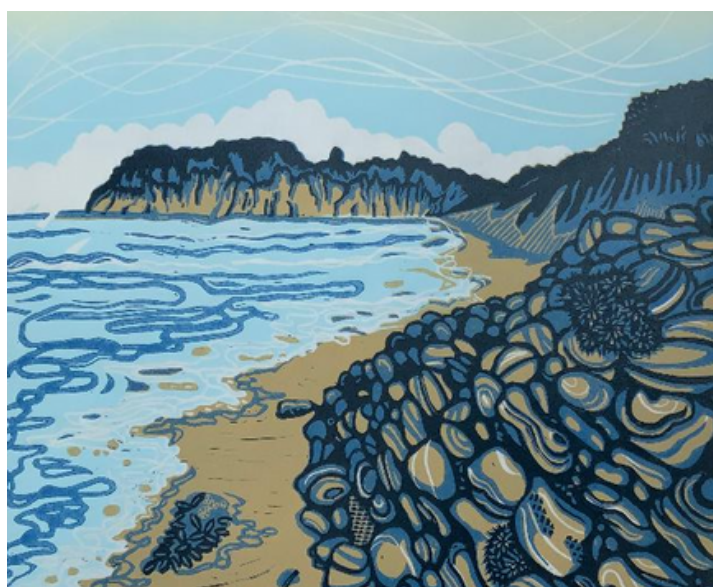


After studying Fashion & Textiles at Leicester Polytechnic (as was), specializing in Footwear Design, I graduated with immaculate timing just as the British footwear industry moved the majority of production abroad. I worked as a shoe designer for a short while but then found myself as a management trainee at Harrods and discovered that I LOVED retail.

Long story short, we moved to Cornwall 28 years ago to raise our family and I have very recently just given up my job at the Post Office to concentrate on my art. Over the years I have experimented with many mediums but for me it was love at first cut when I tried lino printing.

Having been trained in the fashion industry with very quick turnarounds, I tend to use my sketchbooks as places to record snippets of pattern or colour rather than as places to sketch. I write copious notes in them as ideas occur to me and the odd partial design may make an appearance. I tend to refine my ideas on cheap printer paper using my lightbox as this makes separating the layers of the lino cutting easier.

I had an idyllic childhood in Africa and the Middle East and the colours, patterns, sounds and smells have embedded themselves in my soul. I can't sing for toffee but always work with music and tailor my playlist to suit the piece that I am working on.



IMAGES:

Top left- Gilly in her studio.

Top right - 'Snow on Dartmoor'

Bottom right - 'Breakwater'

Featured Artist – Gilly Spottiswoode



What is the best work related thing you have done lately?

I participated in my first Open Studios this year and although I was surprised at how exhausting it was, I loved every minute of it and learnt so much from my studio buddies and made some new friends.

What is your favourite place?

Definitely my garden, preferably with sunshine and several cats.

What is your favourite book?

Anything by Terry Pratchett. A very clever man who managed to weave the most amazing stories around some very serious topics with humour.

He tackled class, racism, abuse of power, sexism, war, religion, death etc. etc with a shrewd and wry observation.

What irritates you?

Pretentiousness.

Who do you most admire?

People who pick themselves up over and over again and just get on with it.

What motivates and inspires you?

I am very aware that I have been given the luxury to concentrate on my artwork so I feel guilty if I don't get into my studio.

I surprised myself with the inspiration when I gave it some thought. I am very inspired by the written word, poetry, song lyrics, nursery rhymes, a great line from a book.

I thought it would be more visual...but there you go....me in a nutshell.

IMAGES:

Above – Tools of the Trade

Below – Moorland Layers



BATTLING ON WORKSHOPS

Art, Craft & Activity Sessions



TUESDAY 19th OCT: Japanese Woodcut & Printing

TUESDAY 16th NOV: Glasswork

TUESDAY 7th DEC: Christmas Decorations & Cards

For anyone who is socially isolated or lonely, who may be suffering from anxiety or depression or other MH issues, or who is a carer and needs a bit of TLC.

Sessions are free, but donations for refreshments will be welcomed, please bring your own lunch.
Fully accessible for wheelchair users.



South Hill Parish Hall, Golberdon, PL17 7ND

12:00PM - 3:00PM

For further info, please call: 01579 384 798

Or email: sue@battling-on.com

News from our members

HANNAH WISDOM

During September, I exhibited at the Southampton Boat show which was a fabulous and very worthwhile experience. I ran a prize draw for one of my prints in aid of the RNLI, and raised £162.50 which will be handed over to the RNLI at Rock soon.



JOHN PETTIT

John has been clearing out his office and has the following items which may be of interest to members, all FREE to a good home.

- A parallel motion drawing board on a folding stand. The board is 127cm x 92cm and the height is about 1m but is adjustable. The whole lot folds down.
- A quantity of cardboard tubes ideal for storing paper or drawings. Size about 9cm dia.x 64cm long

If anybody is interested please telephone John on 01822 820239 after 9th of October



**We don't stop
playing because
we grow old, we
grow old because
we stop playing**

www.alastairguy.co.uk

News from our members

SOPHIE FORDHAM is running Adult Education classes in printmaking:

Paper litho/gum arabic - 9th October 2021

This very accessible form of litho printmaking uses photo copies to print from, giving you the chance to reproduce a range of printed matter onto different surfaces (including fabric and clay), with or without a printing press. You will be taken through each stage of the process printing on paper, step by step, and will make many prints of your own, with a chance to create a concertina book if you choose to.



Cornwall Adult Education printmaking courses In Bude and Liskeard.

Level 1 printmaking Bude - NBU1118 - Tuesday 1.30-4.30pm Starting 2/11/2021 30 weeks.

Level 1 printmaking Liskeard - LSI1014 - Thursday 10am-1pm Starting 2/11/2021 30 weeks

Creative Printmaking for all - Bude - NBU1110 - Wednesday 1-4pm Starting 19/1/2022 10 weeks

Level 1 printmaking

A fantastic opportunity to study printmaking, with great facilities, and a supportive learning environment.

This course is fully funded (free) for those who earn under 17,000 or are receiving universal credit.

For more information contact:

sophie@fordhamsrgo.plus.com or [CLICK HERE](#)

Saturday workshops in My studio

Paper litho - 9th October 10am-4pm

Print, Resist, Fold - 13th November 10am - 4pm

Christmas printmaking - 11th December 10am - 4pm

Kitchen Litho - 15th January 2022 10am - 4pm



WELCOME TO OUR NEW MEMBERS

With the new option of joining Drawn to the Valley via the website, the group has seen an ever growing number of new members signing up. At the time of going to press, the membership now stands at 188 artists from all areas within the Tamar Valley river basin.

Since August, we have welcomed the following new members to the group:



Rebecca Nesbit:

I create jewellery and miniature sculptures using polymer clay, and enjoy the infinite possibilities for mixing colours. The intricate detail is created with a pin and fine sculpting tools. Most of my polymer clay creations involve some form of mixed media, whether this is adding decoration with paint or metal leaf, or incorporating objects found on the beach.

I also paint with alcohol inks, enjoying the vibrancy of the colours. The unpredictability of the ink contrasts with the tight control I have when using polymer clay. Some of my most exciting (and messiest) endeavours come from combining the two.

Anthony Stockbridge:

I studied art at the Chelsea School of Art in the 1960s but, unable to raise a family on what I could earn as an artist, got 'a proper job'.

Although I always carried pen and paints wherever I went, it was not until 2016 that I returned to painting full time.

My work is signed 'Philo' in memory of my maternal grandfather who won a medal in the 1908 Olympics but was killed at the Somme, leading a company of Royal Fusiliers against a German machinegun post. I paint from nature and also create abstract works.



Debbie Sutton:

Using Mindfulness and Meditation as a starting point, my pieces are drawn from connections and influences that present themselves to me.

Most are a combination of energetic mark making, followed by intuitively stitching into each piece by hand.

This has become my method of creating & helps me to understand and engage with my thoughts, emotions and experiences.

WE ALSO GIVE A VERY WARM WELCOME TO THESE NEW MEMBERS:

Jon Evans Mandy Freeguard Philip Harwin Ian Penrose Debra Lee Taylor

MARKETING FOR MEMBERS



OCEAN WINTER MARKETS

Applications are now open for the Autumn (30 & 31st October) and Christmas (4 & 5 December) markets.

Markets are to be held at the fantastic new location at the edge of the moor in Yelverton St Paul's Hall - super accessible, an embarrassment of free parking and a beautiful location.

To apply and for more information:

CLICK HERE or EMAIL SARAH HONYWILL

THE DESIGN TRUST

Are you looking for training specific to starting or growing your craft or design business, or need help with marketing, social media? The Design Trust is an online business school designed to help creatives.

The new website and custom-made online learning platform can be found [HERE](#)

Browse through free blog posts or watch free video training sessions, to find out about online courses for creative professionals and to search for specific topics.



The Big Draw is a visual literacy charity that promotes the universal language of drawing. They are the founder and driving force behind The Big Draw Festival - the World's Biggest Drawing Festival! Find out more at the [WEBSITE](#)

FUNDING OPPORTUNITIES

The Elephant Trust has announced that the next deadline for applications is the 10th October 2021. The Trust offers grants to artists and for new, innovative visual arts projects. It aims to make it possible for artists and those presenting their work to undertake and complete projects when confronted by lack of funds.

The Trust supports projects that develop and improve the knowledge, understanding and appreciation of the fine arts. Priority is given to artists and small organisations and galleries making or producing new work or exhibitions.

The Trust normally awards grants of up to £2,000, but larger grants of up to £5,000 may be considered.

Click [HERE](#) for more information.

Developing Your Creative Practice – Arts Council England

DYCP supports individuals who are cultural and creative Practitioners and want to take time to focus on their creative development.

Round 12 opens on 9th November 2021

£2,000 – £10,000

Click [HERE](#) for more information.

CALLS & COMMISSIONS

The **Tamar Valley AONB** are proposing to commission Drawn to the Valley to deliver some of their arts activities over the next few years. This will include running workshops and developing art events across the valley. We are in initial discussions on what they would like from us as their key partners. So watch this space for more information.

We are already looking for artists to run workshops for those seeking social prescribing activities and opportunities. If you would be willing to run workshops between September and March 2022 – fee is £120 per 3 hour session including provision of all materials, please contact Sue Coleman susandcoleman@aol.com for further information.

Here is information on the two projects which Drawn to the Valley are likely to be involved in.

CELEBRATING TAMARA

We'll create fun and fascinating events for both individuals and families designed to connect communities, engage new audiences and provide great experiences for people enlightening them about their local heritage. Events will be based on themes unique to this beautiful place, including art, the seasons, local produce, special wildlife and water-based activities.

NATURAL CONNECTIONS

This project will help people to engage with the landscape creatively and therapeutically. It will aim to improve people's physical health and mental well-being by helping them to reconnect with nature and heritage and to overcome social isolation. We'll be partnering with link workers, the social prescribing network and other specialist organisations working with groups people from those who just want a walk and a chat to veterans and young people not in education, employment or training. Events will include walk and talk, art therapy, bushcraft and tree planting.

**PLEASE LET US KNOW NEWS OF ANY SUCCESSES RESULTING
FROM THE OPPORTUNITIES PAGES**

VACANCIES

(self-employed/freelance opportunity)

Cattle Market Makers Project

Arts & Crafts Course Leaders and After School Club Leaders

A range of dates starting mid November 2021

Rate of pay: £30 per hour

(Part funded by the European Regional Development Fund and European Social Fund)

We are looking for enthusiastic individuals who are passionate about working with adults who need extra help and encouragement, and who have experience of designing and delivering art and craft sessions. We would like to hear from you if you are able to inspire others with your passion for the subject

You should have experience of teaching/training or working with groups of adults in an appropriate field.

Applications deadline – Thursday 21 October 2021 at 9am

Interviews to be held on Tuesday 26 October 2021

Details and application form available to download from

<http://www.liskeard.gov.uk/notices/vacancies/>

or e-mail office1@liskeard.gov.uk

or from the Town Council Offices

3-5 West Street, Liskeard PL14 6BW.

OPEN STUDIOS Feedback

We are still awaiting feedback from some venues/artists but the information so far suggest that sales and visitor numbers were down by two thirds compared to previous years. Talking to some visitors suggested they were reluctant to go to places they had not been before or to individual studios because of Covid 19 being so prevalent in the region. This may have affected visitor numbers in 2021.

We were fortunate however to get great press coverage in the Cornwall and Devon glossy magazines and a good spread of local news publications. We were also featured on Devon Radio. All the brochures were distributed at the end of July, and wastage totalled only 360 directories this year. I would like to thank our Area Reps and artists for helping distribute across the valley.

The new brochure design had a mixed reception from artists participating, and the design was very page hungry so this will need to be considered next year. The lack of a map of the valley was one comment that came up a number of times. The individual maps took up a lot of space and we need to consider if they are still needed or we go with maps of areas (in a trail format) rather than each specific town or village. We used What3Words this year for the first time and most people have sat navs or use Google Maps now so the usefulness of these maps needs to be reviewed.

There were a number of comments on signage supplies and the numbering system which needs to be reviewed for next year.

From those artists who responded so far –
Total Sales – £16,802
Visitor Numbers – 1354

I would like to thank Anne Crosier and Ren Jackaman for all their work for Open Studios – it would not have happened without them.

Sue Coleman – Chairman of Drawn to the Valley.

Letter to the Members,

I am writing this not in my role as a Committee member, but like you, as a member of a community of artists and makers.

Some of the feedback from Open Studios was, I felt, quite harsh and personal. There were some really, positive comments as well.

In a spirit of creating a harmonious and supportive network, please consider the following:

- Laura Joint was specifically appointed to market the event and to that end she secured six published articles.
- The number of brochures was based on the wastage from the previous OS and there were very few left over.
- Organising the event is a major UNPAID task and Sue Coleman and Anne Crozier did a splendid job.
- I think it needs to be said that it is everyone's responsibility to contribute to the success of our events.
- I also think that as a committee we need to have better ways of communicating to the membership to avoid misunderstanding.
- Positive feedback is always welcome

Lyn Edwards

If you would like to respond to this letter, please send an email to:
contact@drawntothevalley.org

COMMITTEE - WHO'S WHO



Sue Coleman
Chair &
Sponsorship/
Fundraising
Coordinator



Juliet Cornell
Vice Chair &
Social Media
Coordinator



**Gilly
Spottiswoode**
Treasurer



Ildikó Sealey
Area Rep &
Membership
Coordinator



Melanie Guy
Newsletter
Editor



Lyn Edwards
Outreach
Development
Coordinator



Anne Crozier
Working
Days
Coordinator



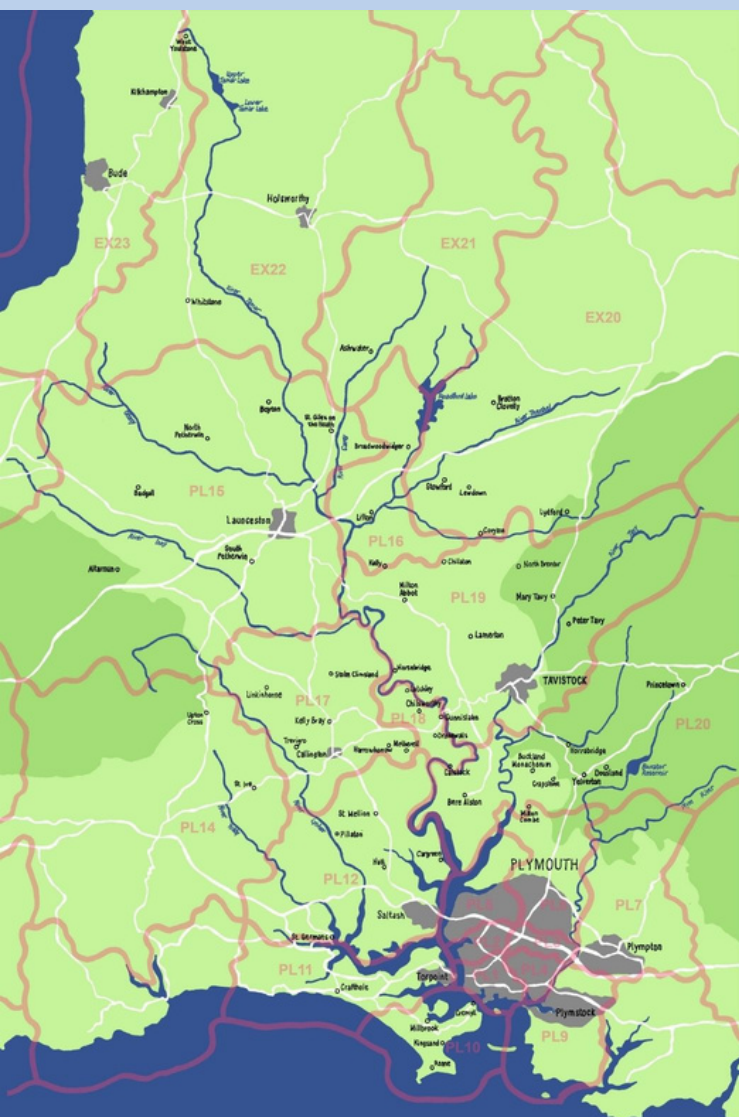
Maria Floyd
Committee
Member



Kathy Lovell
Committee
Member



Ren Jackaman
Administrator



WHO'S YOUR AREA REP?

BUDE/LAUNCESTON/LIFTON:
PL15, PL16 & EX23
ANITA TOWNSEND
mongoosemoondaisy12@gmail.com
01822 860123

GUNNISLAKE/CALSTOCK: PL18
IAN PETHERS
glenrockstudio@yahoo.com
01822 834289

SALTASH: PL12
JOANNA SHEPHERD
hello@mrsmarvellous.co.uk
07721 453385

TAVISTOCK: PL19
KATY CHOROSZEWSKA
katycho@icloud.com
01822 612694

RAME PENINSULA: PL10 / PL11
CHARLOTTE SAINSBURY
casainsbury@hotmail.com
01752 658737

YELVERTON: PL20
ANNE CROZIER
anne@leighfarm.co.uk
01822 840270

PLYMOUTH : PL1 – PL7 & PL9
BRYONY UPTON
bryonyupton@gmail.com
01752 559143
&
SHERON KING
sheron@madhattersstudio.com
01752 291260 / 07795 805520

CALLINGTON: PL14 & PL17
CLARE LAW
clare.e.law@gmail.com
07939 040956
&
TESSA SULSTON
info@callingtonartschool.com
01579 383491

WEST DEVON VILLAGES: EX20 & PL19
SALLY O'NEILL
nielsally83@hotmail.com
01822 860263